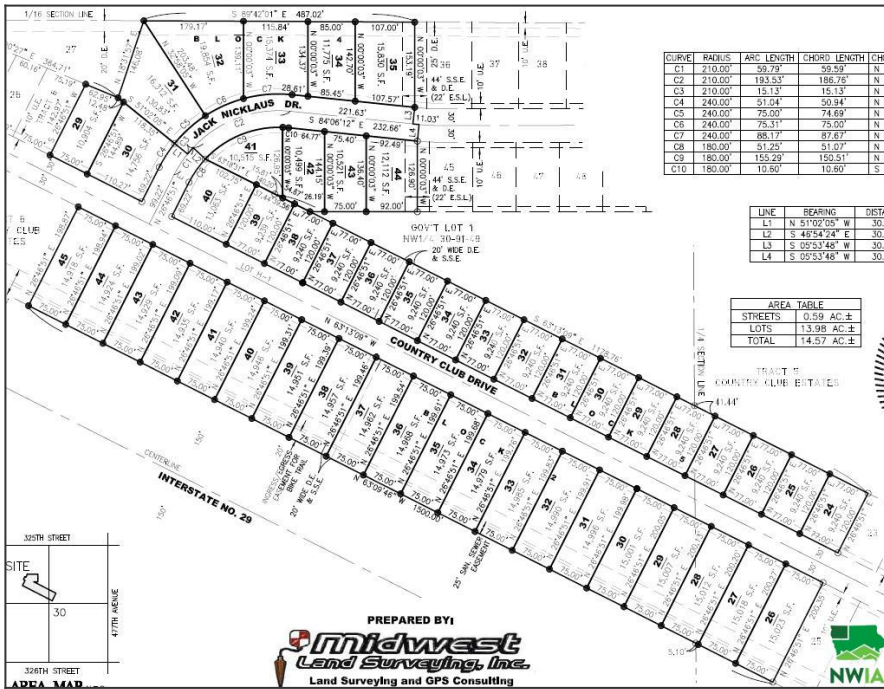


# 1102 Country Club Drive, Elk Point, SD

**\$23,500**

Listing 816770 – Elk Point, SD – Building Site, Residential



Acres	0.34 acres(s)
Taxes	\$0

Shovel ready lot with 75' of frontage and the potential for daylight windows! The City of Elk Point provides sewer, water, electricity, and garbage service. MidAmerican Energy provides natural gas. Country Club Estates has protective covenants. Owner is a licensed real estate broker.

Please visit website for more information.

### Directions

Take Exit 15 off I-29 to Beautiful Country Club Estates, Elk Point, SD.



**Troy Donnelly**  
 Broker/Owner  
 Email: tdonnelly@iw.net  
 Phone: 712-899-3748

