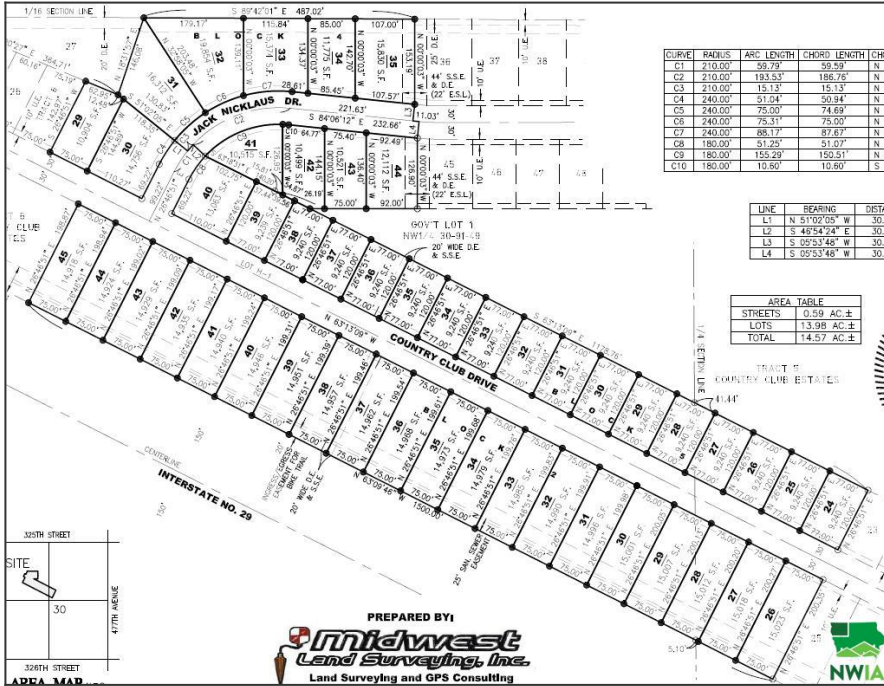


1201 Country Club Drive, Elk Point, SD

\$30,000

Listing 816738 – Elk Point, SD – Residential, Building Site



Acres	0.21 acres(s)
Taxes	\$0

Shovel ready lot with 77' of frontage and the potential for a walk-out basement! The City of Elk Point provides sewer, water, electricity, and garbage service. MidAmerican Energy provides natural gas. Country Club Estates has protective Covenants. Owner is a licensed real estate broker.

Please visit website for more information.

Directions

-Take Exit 15 off I 29 to Beautiful Country Club Estates, Elk Point , SD.



Troy Donnelly
 Broker/Owner
 Email: tdonnelly@iw.net
 Phone: 712-899-3748

