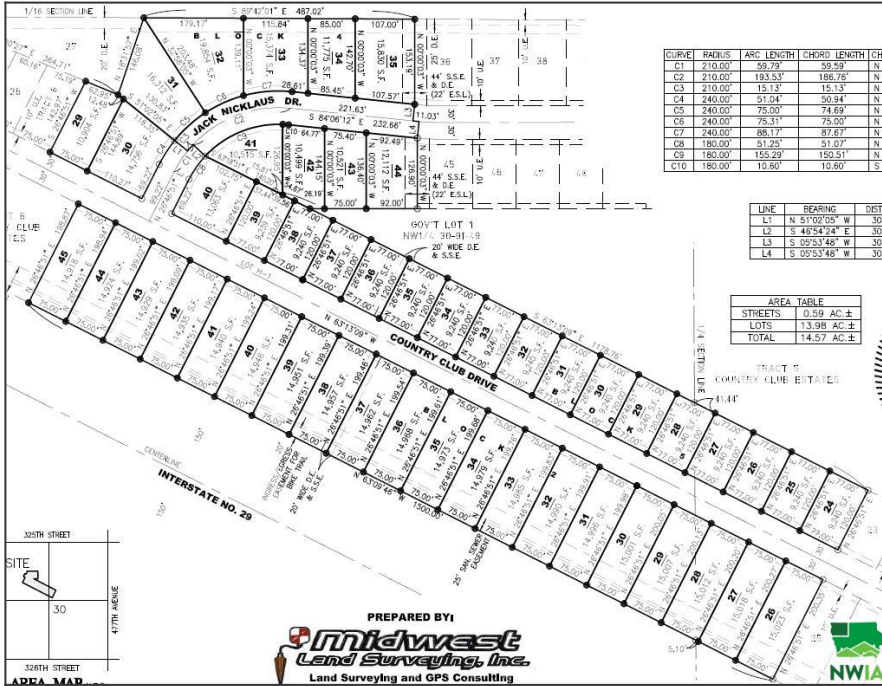


1210 Country Club Drive, Elk Point, SD

\$23,500

Listing 816761 – Elk Point, SD – Residential, Building Site



Acres	0.34 acres(s)
Taxes	\$0

Shovel ready lot with 75' of frontage and the potential for daylight windows! The City of Elk Point provides sewer, water, electricity, and garbage service. MidAmerican Energy provides natural gas. Country Club Estates has protective covenants. Owner is a licensed real estate broker.

Please visit website for more information.

Directions

Take Exit 15 off I-29 to Beautiful Country Club Estates, Elk Point, SD.



Troy Donnelly
 Broker/Owner
 Email: tdonnelly@iw.net
 Phone: 712-899-3748

