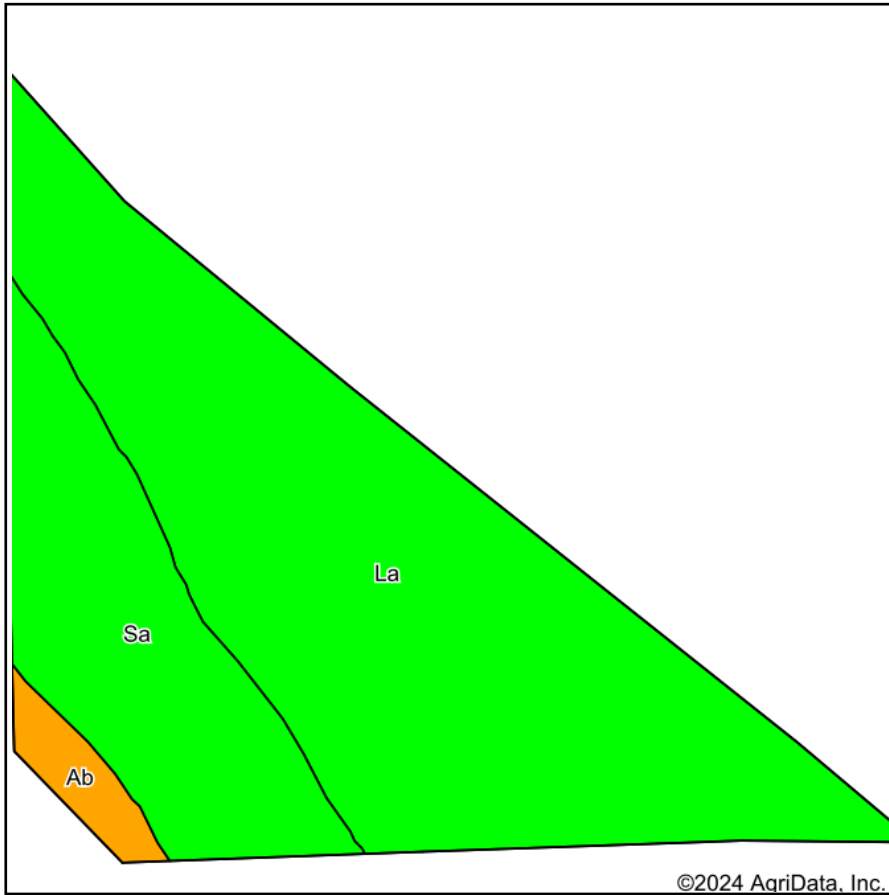
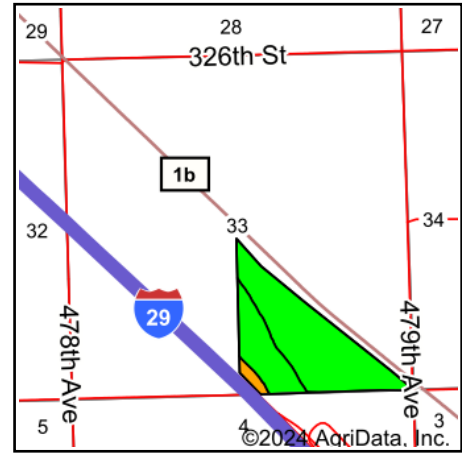


Soils Map



Soils data provided by USDA and NRCS.



State: **South Dakota**
 County: **Union**
 Location: **33-91N-49W**
 Township: **Elk Point**
 Acres: **71.02**
 Date: **9/9/2024**



Maps Provided By:



Area Symbol: SD127, Soil Area Version: 27

Code	Soil Description	Acres	Percent of field	Non-Irr Class Legend	Non-Irr Class *c	Irr Class *c	Productivity Index	Bromegrass alfalfa AUM	Bromegrass alfalfa hay Tons	Corn Bu	Corn Irrigated Bu	Kentucky bluegrass AUM	Oats Bu	Smooth bromegrass AUM	Soybe Bu
La	Lakeport silty clay loam	50.53	71.1%		lw		97	9.2	5.5	138		3.4	76	5.7	
Sa	Salix silty clay loam	18.18	25.6%		lw	I	98	5		112	150				
Ab	Albaton silt loam, overwash	2.31	3.3%		lllw		59	5.3	3.2	105		2.6	58	4.3	
Weighted Average							96	8	4	130.3	38.4	2.5	56	4.2	

*n: The aggregation method is "Weighted Average using all components"

*c: Using Capabilities Class Dominant Condition Aggregation Method

*- Irr Class weighted average cannot be calculated on the current soils data due to missing data.